

# TAMESIDE STRATEGIC PARTNERSHIP NEWSLINE



Issue 5

March 2004

## NEWS FROM THE BOARD

### DEVELOPING THE TAMESIDE STRATEGIC PARTNERSHIP BOARD

The Board now has new terms of reference which clarify the role of the Board and the thematic partnerships and set out a reporting structure which focuses on the Community Strategy key measures. The new terms of reference can be viewed on the internet at [Tameside.gov.uk](http://Tameside.gov.uk)

Each thematic partnership is now asked to report to the Board once per annum with an update on the progress it has made in implementing its partnership agreement. This means that people presenting future reports to the Board will concentrate more on analysis of performance, benchmarking against other areas and spotting trends rather than merely presenting information.

### NOMINATIONS FOR DEPUTY CHAIRS

In order to facilitate better partnership working, the Board is seeking to appoint two Deputy Chairs who will help to direct and assist the work of the Local Strategic Partnership. Nominations should reach John Eley (LSP Co-Ordinator) by 19 April. Contact [John.eley@tameside.gov.uk](mailto:John.eley@tameside.gov.uk)

### NEW BOARD MEMBER

The LSP would like to welcome the new Divisional Commander for Tameside Police, Kevin Muligan. Kevin will be replacing David Crompton on the Tameside Strategic Partnership Board.



LSP Chair  
Councillor Philip Wilkinson

**Welcome to the new look newsletter for the Tameside Strategic Partnership (the Local Strategic Partnership for Tameside). The newsletter will give you feedback from the quarterly Tameside Strategic Partnership Board meetings as well as providing an update from the other partnerships and organisations which form the Tameside Strategic Partnership. I hope you find it gives you a useful summary of what is happening across the Partnership and is an interesting and informative read.**

**STOP PRESS** Diary date – due to unforeseen circumstances the next meeting for Board Members on 30th April has had to be re-arranged. It will now be on Friday 7th May, 9.30am-12 noon at Hyde Fire Station, Railway Street, Hyde. Apologies for any inconvenience caused.

## NEW PARTNERSHIP LOGO



The Board has a new logo – thanks to your votes. Communications professionals from Board organisations have been meeting to draft a communications strategy for the partnership.

One of its first projects was to strengthen the Partnership's identity – with a new logo. Suggested alternatives were emailed to Board members after the last meeting – and this was the overwhelming choice.

The group has also defined a media protocol and is now sharing news items – several are included in this newsletter.

It will also be developing the Partnership website over the coming months and producing more publications.

*If you would like to make use of the partnership logo please contact [Lindsey.macdonald@tameside.gov.uk](mailto:Lindsey.macdonald@tameside.gov.uk)*

## PERFORMANCE MANAGEMENT

Although the Tameside Strategic Partnership has been described as 'one of the strongest regionally' Board members are committed to continually improving performance.

Improvement will take place through a Performance Management Framework which consists of several elements:

- ❖ Partnership Agreements – each thematic partnership is committed to delivering targets relevant to the community strategy and each will produce an annual report to the Board.
- ❖ Quality of life report – which will provide a range of ward level information to highlight issues of inequality for action.
- ❖ Development days – which will allow Board members to discuss and agree how to develop and improve the Board, the partnerships and the framework outside the regular business meeting. This work is described within the LSP Development Plan ([www.tameside.gov.uk/tmbc6/dev-plan.htm](http://www.tameside.gov.uk/tmbc6/dev-plan.htm))
- ❖ Improved communications - A range of improvements are planned such as a better newsletter and website, new logo and improved joint working arrangements.
- ❖ A report on the Performance Management Framework will now go to all our partnerships to help ensure a common understanding of how our partnership structure will work and what they are being asked to deliver.

## SIMPLY THE BEST

Tameside Council is set to be a pilot second round Public Service Agreement authority. The council, working in partnership through the LSP, aims to sign a new agreement with the government in April.

Tameside was one of the first six councils to sign up in the first round and is due to get a total £5m for reaching those targets. Some of the targets have already been met – early! – and the council is awaiting some of that funding.

Tameside's second round PSA is based around the community strategy with a crosscutting focus on cohesion and inclusion. The priorities and measures proposed to the government are:

### Tackling underperformance in educational attainment

- ❖ Improving GCSE results in lowest performing schools and among boys
- ❖ Increasing percentage of children getting NVQ 5 in ICT
- ❖ Increasing proportion of school-leavers who go on to FE

### Reducing the variations in crime between different communities

- ❖ Reduce level of burglary in high crime areas
- ❖ Reduce the number of young offenders who re-offend
- ❖ Reduce youth nuisance
- ❖ Reduce the number of distraction 'bogus official' burglaries

### Improving the cleanliness and overall quality of the environment

- ❖ Increase the percentage of waste recycled
- ❖ Increase street cleanliness
- ❖ Reduce proportion of households living in non-decent private housing

### Improving social care and health

- ❖ Reduction of use of B and B for homeless households
- ❖ Increasing number of older people helped to live at home
- ❖ Cutting waiting times for home adaptations for older and disabled people
- ❖ Increasing take-up of Pension Credit and Council Tax Benefit among older people

## CONSULTING YOUR CUSTOMER

The Board now has a consultation framework – with partner organisations committing to share information on consultation activities.

This work will also be co-ordinated through the communications group which will:

- Share information on consultation activities and mechanisms
- Identify opportunities for joint consultation
- Share information on consulting with different groups within the Tameside community

Report relevant consultation results to the Board and thematic partnerships.

Tameside Council now has a consultation database which allows the public to search for both past and planned consultation and to find out how to take part and learn about the key findings. All Tameside organisations are invited to put information on the site which will be linked to the LSP web pages.

To visit the site go to [www.tameside.gov.uk/tmbc8/consultdata.htm](http://www.tameside.gov.uk/tmbc8/consultdata.htm).

## THE NEW REVOLUTION - ETAMESIDE

ICT is to the 21st century what steam was for the industrial revolution. An updated e-tameside strategy for citizens businesses, public and voluntary organisations aims to make sure we maximise external funding to Tameside and, to do that, to make our work fit with regional and national ICT strategies.

The strategy and action plan covers e-learning for all ages; e-procurement; e-business; e-government to improve access to services and increase efficiency; e-inclusion, to make sure opportunities are available to all sections of the community; and e-funding.

The e-tameside team have a grant finder service to alert e-tameside members to opportunities to bid for government, European and other funds to support ICT projects.

For more information contact Paul Dowthwaite, Strategic Consultant, Tameside Council, [paul.dowthwaite@tameside.gov.uk](mailto:paul.dowthwaite@tameside.gov.uk)

# ACTION ON ALCOHOL

The Board has backed a new alcohol strategy for the borough. The strategy highlights the role alcohol plays in both health and crime issues nationally:

- ❖ 65% of domestic violence incidents involve alcohol consumption (Alcohol Concern)
- ❖ 23% of child neglect cases (NSPCC)
- ❖ 17% of personnel directors say alcohol consumption was a 'major problem' for their organisation
- ❖ 78% of assaults and 88% criminal damage cases are committed while under the influence of alcohol

In the 12 months to September there were 2368 alcohol-related crimes in Tameside – 200 a month. And 86% of Tameside residents put drug and alcohol misuse as a major concern

The draft strategy – now out for consultation – proposes:

- ❖ All agencies (accident and emergency, police, Youth Offending Team) should collect more robust data highlighting the link between alcohol and social issues
- ❖ Agencies work with alcohol retailers on initiatives to prevent alcohol misuse
- ❖ All workers in relevant agencies, particularly doctors practices, to be trained to recognise alcohol problems in clients and refer them
- ❖ All schools and workplaces should have alcohol policies, including education programmes
- ❖ Partners should raise awareness of the roles of different agencies in alcohol work – eg a service directory
- ❖ Better services for older people and those with mobility problems
- ❖ More community support for people who leave detox
- ❖ The primary care trust improve its services for alcohol misusers
- ❖ Adopt prevention programmes which have been successful elsewhere

*The Primary Care Trust are co-ordinating the action plan. Copies of the strategy are available from Sue Fuller or Simon Smith at the trust, or as a word document, by emailing [Lindsey.macdonald@tameside.gov.uk](mailto:Lindsey.macdonald@tameside.gov.uk)*

# CRACK DOWN ON GRAFFITI

Joint action by landowners to tackle graffiti by reducing cleaning time and cutting costs is being promoted by the Tameside Strategic Partnership.

"Many of us are paying separate companies to do one-off graffiti removal. It makes sense to explore a longer-term solution which could mean more income for New Charter, a cheaper service for other organisations and more attractive streets," said Chairman Cllr Philip Wilkinson.

New Charter Housing Trust and Tameside Council have agreed to work jointly to reduce the impact of graffiti. If your organisation would like to get involved contact Andrew Mason at [Andrew.mason@tameside.gov.uk](mailto:Andrew.mason@tameside.gov.uk)

# MORE HOUSING ACTION FOR YOUNG PEOPLE



The housing needs of 16 and 17 year olds – and the need to promote lifelong homes (those which can easily be used by disabled or older people) were highlighted in the Housing Partnership report to the Board.

The use of bed and breakfast for homeless people rose last year, due to the number of 16 and 17 year olds needing accommodation. While landlords have around a dozen temporary units and New Charter Housing Trust are redeveloping Gibson Terrace (see below), the Board wanted more information on how the borough is tackling this problem.

And while 73 per cent of tenants feel safe in their local area, that's less than the 85 per cent total across the whole of Tameside.

The Board also heard that Tameside needs to be vigilant. Extra grants are supporting Manchester, Oldham, Rochdale and Salford to renew their inner area housing. Tameside is supportive of these projects, but is also aware of the need to retain healthy housing growth within the borough.

## Other news:

- ❖ Hattersley tenants are likely to get a vote of the transfer of their homes to a registered social landlord in July.
- ❖ 40 per cent of new homes in 2002/3 were Band D council tax or above
- ❖ new housing is being development at Longlands Mill, Stalybridge, and Junction Mill, Ashton
- ❖ people wanting to rent in Tameside can search the homes4rent website. The main social landlords regularly update details of available property, in a bid to make the rented market more accessible.

The Board has asked for a subsequent report to show how Tameside is tackling this issue.

## Children and young people



The newly formed partnership has published its plan for 2003/6 on services for children and young people. It has six aspirations for all 0 to 19s covering health and wellbeing, achievement and enjoyment; participation and citizenship; child protection; responsibility; and inclusion. Moreover, it will implement prevention and early intervention, which is a key feature of improved services for children and young people.

The initial action plan (to March 2004) is to:

- ❖ Map existing services for 0 to 19s, the providers and their performance measures
- ❖ Discover the gaps and duplications and current resources

This could lead to pooling budgets and single commissioning of services.

The partnership will continue to develop a user network to receive views of children and young people about services and it will consider rationalising the existing partnerships for children and young people – so the work comes under the new umbrella of the children and young people's partnership.

Meanwhile, work on the children's database – required by law – is continuing. A pilot scheme in Hattersley is due to go live shortly. This database will include basic information on all the 60,000 0 to 19 year olds in Tameside (name and address) to improve child protection liaison between local agencies – ie the council (schools, social services, youth services etc), health (doctors, health visitors, hospitals), police and other key agencies.

*Next meetings April 29 June 24*

*Contact Ameena Ahmed  
ameena.ahmed@tameside.gov.uk*

## Health and Social Care

The Health Partnership and Modernisation Board is the senior most health and social care planning group in Tameside and reports directly to the Tameside Strategic Partnership. Its membership is drawn from the Chairs, Chief Executives and senior directors of Tameside and Glossop Primary Care Trust (PCT), Tameside and Glossop Acute Services NHS Trust, Pennine Care NHS Trust (mental health services), Tameside Metropolitan Borough Council Social Services, plus three elected voluntary sector representatives (currently Age Concern Tameside, Tameside Citizens Advice Bureau and Tameside 3rd Sector Coalition) and elected politicians (Councillor John Taylor).

For the majority of health and social care service areas, the move towards jointly commissioned services with pooled budgets continues. In effect, this means that the finance for a service area is paid for jointly by health (PCT) and social services following government guidelines. During the last couple of months the older people's service has announced details of its (£88 million) joint commissioning strategy.

To deliver the health and social care sections of the Tameside Community Strategy a 'Health Improvement and Inequalities Strategy' has been produced which will act as a performance monitoring tool, allowing the HPMB to measure the effectiveness of the various service planning groups which report to it.

*Next meetings May 21 August 20*

*Contact Steve Whittaker  
steve.thealliance@btconnect.com*

## Lifelong Learning

Some of the partnership's recent achievements are:

### 14 – 19 Strategy

- ❖ Commissioned KPMG to undertake a study of 14 – 19 provision in Tameside
- ❖ Draft report now being considered by the 14 – 19 Strategy Group
- ❖ Aim to produce a strategy by early April 2004 to be agreed by all schools and providers of post 16 learning in the borough
- ❖ The Strategy Group is also considering how best to meet the requirements of a 14 – 19 OFSTED area inspection
- ❖ Contributing to the Learning and Skills Council Strategic Area Review for Tameside

### Basic Skills

- ❖ A basic skills co-ordinator has been appointed to take forward the basic skills strategy
- ❖ The partnership has done preparatory work to commission a borough-wide basic skills survey. This will repeat the one conducted on 1999 to give a measure of distance travelled

### ESOL

- ❖ Recommendations from the Community Cohesion Partnership report into access to English language provision adopted by the Lifelong Learning Partnership
- ❖ ESOL Working Group formed and led by Tameside College
- ❖ ESOL strategy being developed. Two community consultation events already held, one more planned
- ❖ Strategy to be launched by the end of March

### General

- ❖ Additional core funding secured from the LSC for the period April – end July 2004

*Next meetings April 1 June 17*

*Contact Catherine Moseley  
Catherine.Moseley@tameside.gov.uk*

# NEWS FROM THE THEMATIC PARTNERSHIPS

## Community Legal Services



a quarterly basis. The December meeting heard a presentation from Pami Loomba of the Greater Manchester Immigration Aid Unit on the services her unit provide in Tameside.

The innovative Mental Health Money Advice Project continues to receive considerable interest. Clare Dodgson, Chief Executive of the Legal Services Commission, visited Tameside on 16th January to hear about the work of the project herself. The project ran a workshop at the national MIND conference in March.

Tameside Council has agreed to sign an Accord with the Pension Service, which will lead to the establishment of a joint home visiting team. They will be contacting vulnerable older people to ensure they are receiving all the benefits they are entitled to. Increasing benefit take-up may be a new Local PSA target for Tameside in the current round of Public Service Agreement negotiations.

The CLS provider group provides a forum for all those involved in giving advice to meet on

*Next meetings May 13 August 12*

*Contact Linda Walker or Alan Franco  
Linda.walker@tameside.gov.uk or  
alan.franco@tameside.gov.uk*

## Crime and Disorder Reduction

A hard-hitting drugs and alcohol awareness campaign is hitting the streets of Tameside – showing that anyone can become hooked. The campaign signposts people to the local agencies here to help.

Last year 885 Tameside people accessed treatment for drug and alcohol problems. But it is believed there are thousands more in the borough who could benefit from the range of free and confidential services available. Addressing anti-social behaviour is a priority and over 300 individuals have been targeted. 19 Tameside residents are subject to Anti-Social Behaviour Orders, and further applications are pending. Written warnings have been issued in over 150 cases and 54 face-to-face interviews have been conducted. 17 Acceptable Behaviour Contracts have been agreed. The anti-social behaviour team has dealt with over 250 complaints from the public regarding anti-social behaviour. The team are also in the process of developing a borough wide multi-agency anti-social behaviour strategy.

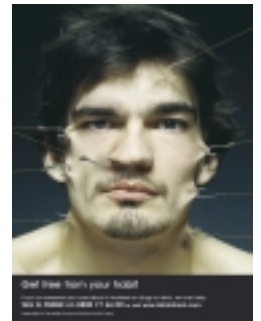
A comparison of crime statistics between April to Jan 2003 and April-Jan 2004 show:

- ❖ Burglary of dwelling down six per cent
- ❖ Burglary other down six per cent
- ❖ Robberies down seven per cent
- ❖ Vehicle crime down 22 per cent
- ❖ Theft from shops down 22 per cent
- ❖ Theft from the person down nine per cent
- ❖ Total crime down three per cent
- ❖ Youth annoyance down two per cent

Town centre initiatives:

- ❖ Launch of 'taxi you can trust' card for town centre visitors
- ❖ CCTV has proactively dealt with over 800 incidents since the recording of incidents took place, as required by our Code of Practice, resulting in over 360 arrests. In December for example, CCTV was successful in identifying 34 incidents resulting in 28 arrests.
- ❖ Six new pedestrian Helppoints in Ashton town centre

Crimestoppers figures for Tameside are higher than all comparable districts in Greater Manchester. In 2003, 821 calls were received to the confidential free phone number from the Tameside area. They resulted in 334 police investigations – and 46 arrests.



*Next meetings April 29 June 24*

*Contact Lisa Lees or Mike Rhodes  
lisa.lees@tameside.gov.uk or  
mike.rhodes@tameside.gov.uk*

## Community Cohesion

The Partnership will be looking at the first draft of the Community Cohesion strategy at the beginning of March. The aim is to have the strategy finalised and agreed within the next three months.

All the members of the public who took part in the 'Building Stronger Communities' day have received a report of this consultation event. Their suggestions will feed into the new strategy.

The IDeA helped run the event and were so impressed by the day that they are promoting it nationally as a good example of "public visioning" - letting local people define what community cohesion means to them.

*Next meeting May 18*

*Contact Tracey Austin  
tracey.austin@tameside.gov.uk*

## Economic Forum

The Forum, made up of Manchester Enterprises the colleges, local high schools – represented by Longdendale Language College – TREC, the LSC, Groundwork, the Volunteer Centre and the council, is now working on the new 2004-7 Economic Development Plan for the borough. It welcomes feedback on any emergency topics it should be addressing to deliver a prosperous local society.

*Next meeting July 14*

*Contact Phil Spence or Lisa Hoyland  
phil.spence@tameside.gov.uk or  
lisa.hoyland@tameside.gov.uk*

## TENANTS SATISFIED WITH NEW CHARTER

Eight out of 10 New Charter tenants consider the landlord is doing a good job, according to their latest market research - a phone survey of 1000 tenants, carried out by Oldham company ph Research Services.

The results show a 13% increase in just 12 months. Tenants liked the network of high street shops in Ashton, Hyde, Denton and Stalybridge. Facilities were rated good by 83%.

The quality of repairs also attracted high ratings. Almost 70% of tenants said rents were good value for money. More than 60% of all tenants said their homes had already received improvements, and there was another increase to 85% in those satisfied with the upgrading. Customers were also very pleased with the opportunities they have to participate in New Charter - more than 73% were happy - one of the highest results country-wide.

Tenants gave a big vote of confidence to New Charter about the way they are kept informed. Nine out of ten rated the landlord as good, and there were similar increases in satisfaction with ease of contacting New Charter (85%) and taking tenants' views into account (87%). Eight out of ten were satisfied with how we manage their neighbourhood.

## NEW HOMES FOR HOMELESS

The Listed Gibson Terrace, in Ashton, is being refurbished by New Charter HTG for homeless people. The row of three-storey terraced houses was originally built to house middle managers by local industrialist Hugh Mason. Tameside Council converted the row in 1980 to provide 24 flats of varying sizes for those needing an immediate place to stay. Now there will be 20 homes for both single people and families. The work will cost around £1.5million, with £995,000 Housing Corporation grant and £250,000 from Tameside Council.

# Tameside Racial Equality Council

Tameside REC is committed to working in cross sector/partnerships and engagements to ensure that communities can live together as citizens and have civic pride. Effort is invested in the design and new ways of delivering services that contributes to the quality of life and sustainable initiatives in Tameside and the neighbourhoods.

Tameside REC is experienced in cross-authority work within the Greater Manchester conurbation to promote racial equality and reduce discrimination and harassment.

The REC is already successfully engaged in delivering under SLA with Commission for Racial Equality and Tameside Council to:

- ❖ Support victims and witnesses of racial harassment and mainstreaming their needs
- ❖ Take account of the effect of religion or belief on race relations
- ❖ Leadership programmes in civic engagement for young people
- ❖ Develop local responses to the impact of the far right on community stability
- ❖ Highlight the positive contributions of asylum seekers and refugees
- ❖ Develop good local practice on issues of sustainability and inclusion of these communities
- ❖ Assess the local impact of the delivery of the race equality duty under the Race Relations Amendment Act 2000
- ❖ Develop good practice in tackling the issues relating to Gypsy and Traveller communities.
- ❖ Provide Race Discrimination Service to Tameside and South of Manchester residents of Stockport, Salford, Trafford, City of Manchester);

The REC is accredited by the CRE as Centre of Excellence to deliver Race Discrimination Services outside Tameside. The demand on this service from other local authority complainants has increased and currently the service is operating at an optimum level.

From April to December 2003 the service has managed to secure over £200,000 pounds compensation for clients as well as ensuring that discrimination stops. It has now established a very positive reputation amongst other agencies and staff receive referrals from a very broad spectrum of organizations and even agencies outside of the geographical area we serve.



*Apprentice electrician Christopher Hand receives his award from New Charter Group Chief Executive.*

*New Charter is now recruiting for modern apprentices in its housing administration sections and the building company to start in September. The recruits, aged 16 to 21, will be offered training, through Skills Solution and local colleges, and work-based experience leading to recognised national qualifications while in employment.*

# A KEY TO CUT PRICE LEISURE

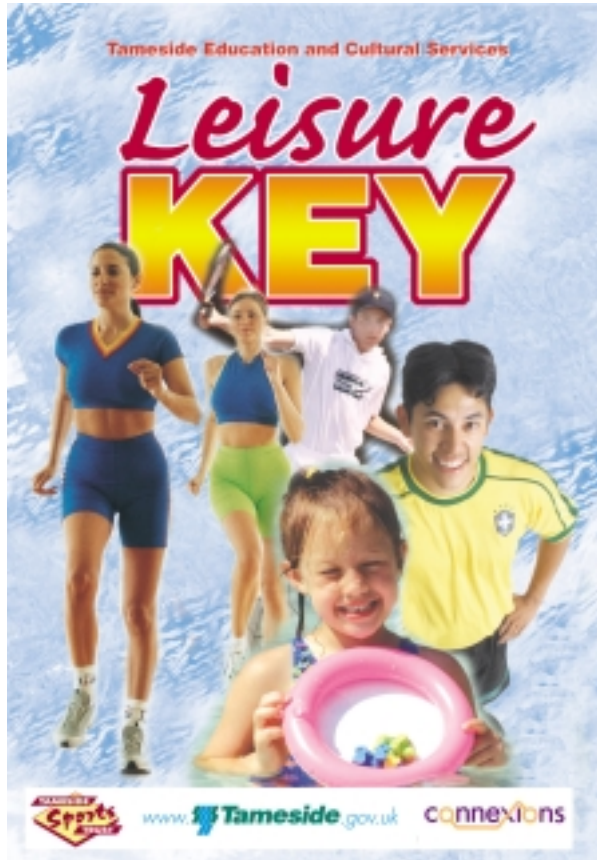
The new Leisure Key scheme is launched this month in Tameside. The scheme offers discounts for Leisure Key holders.

If you are between 16 and 59 and live in Tameside then you are entitled to apply for either an active or an active plus leisure key card.

The active card is £3 and is valid for 12 months. It allows you to join in sporting and recreational activities at reduced prices whenever you like.

The active plus card is free and is for people who claim certain types of benefit.

An application form is available in the March edition of the council's Tameside Citizen newspaper and in leaflets available at all sports and leisure centres and council outlets.



## FUNDING WORKSHOPS

Tameside Third Sector Coalition is hosting two workshops to help local groups apply for external funding.

Awards for All Workshop

- ❖ Up to £5000 for any voluntary or community group.  
Friday 19 March, 11am – 3pm
- ❖ Local Network Fund  
Up to £12,000 for young people's projects aged 0 – 19 years.  
Thursday 22 April, 11am- 3pm

## YOUTHFUL CONNEXIONS

Tameside Council's youth service staff and staff who provide the Connexions service in the borough are to work more closely together.

The youth service, with 156 staff and a £1.79m budget, will soon work alongside the Tameside Connexions staff and will report to the manager of Tameside Connexions, Sheila Piazza, for work planning.

Youth service staff will remain council employees and the budget will remain with the council. The move is in line with national guidelines.

The aim is to provide a more coherent, joined up service with easier access to the expertise which the joint staffing will provide.

Shared information will help both Connexions and the youth service reach those young people hardest to help and joint training will help both teams of staff work towards their common aims. Young people will also be able to reach staff for longer in a wider range of locations – as duplication of service will be avoided.

## NEW ERA FOR POLICING IN TAMESIDE

A new era in policing will take to the streets of Tameside in the Division's biggest ever restructure.

From March, four new 'neighbourhood areas' are being created to replace the old Division and Sub Division structure. Each of the neighbourhood areas will be led by an Inspector and a team of officers working to tackle community issues and join with partners to solve the problems that exist.

Chief Superintendent Kevin Mulligan, Tameside Divisional Commander, said: "This is an exciting time and the change gives us the opportunity to put officers back into the heart of our communities. The Inspectors will take ownership of their area, will respond to the issues and are accountable to local people.

"They will need the support of partners and the public to really make a difference to the quality of life in our neighbourhoods."

Additional officers will be put into community beat officer roles to support the change in policing.

The four neighbourhoods are:

- Ashton
- Denton, Audenshaw and Droylsden
- Hyde, Hattersley and Longdendale
- Mossley, Stalybridge and Dukinfield



Posters, leaflets and postcards with details of the new Neighbourhood Area Inspectors, who they are and how they can be contacted will be circulated across Tameside. So look out for the information.

## DROP-IN

New Charter has joined forces with Greater Manchester Police in the latest service improvement for residents in North Dukinfield. Local police officers will be available for crime prevention and general policing advice at the housing landlord's office on Central estate fortnightly from now on.

The lunchtime drop-in is another example of the collaboration between New Charter and the police, two of the key partners in the Crime and Disorder Reduction Partnership.

## PROCUREMENT EXCELLENCE

Tameside Council is to lead the new government North West Centre of Excellence for local council purchasing.

The government announced yesterday a major new programme to encourage best practice in local authority purchasing practice and has selected nine councils to be regional leaders. These new centres will drive innovative change in purchasing by providing expertise to other councils and build on existing good practice.

Local councils around the country spend around £40b a year on goods and services. Tameside Council itself spends around £100m of its budget outside the council.

Tameside will be working in partnership with the nine other Association of Greater Manchester Authorities and Liverpool City Council.

## NEW JOINT BASES

Tameside Council patrollers and police will be coming together in their local bases over the next few months.

And people will be able to pop in to see them at public counters at their bases, one for each of Tameside's eight District Assemblies.

The first drop-in centre is likely to be open in Stalybridge Resource Centre. Patrollers have moved in – and the police will join them early next year. The public counter should be available this month.

They will be followed by the bases at Mottram Court House and Hyde Town Hall around May. Police are already on site at Denton Town Hall, and the patrollers will join them in the next few months.

In Droylsden, they will share a temporary base in the Concorde Suite, once information centre staff have moved to the new Customer Service Centre in Droylsden Library. This is likely to happen over summer. The permanent joint base will be in Droylsden police station.

A temporary base is being sited outside Dukinfield Town Hall, awaiting the full refurbishment of the building. Police and patrollers will be creating an Ashton base at Broadoak Community Centre.

Meanwhile, patrollers and police have plans to share Mossley police station.

## CHARITABLE CENTRICA

As Cancer Research UK celebrates its second anniversary, British Gas workers from Hattersley were on hand to deliver a surprise birthday cake...and a £2,000 cash donation.

Staff visited the Paterson Institute at the Christie Hospital in Manchester to present researchers and medical staff with the bumper fundraising news.

Cancer Research UK was chosen by British Gas staff as their employee charity of the year and local workers have raised almost £2000 in just four months.

Michelle Worthington, one of the British Gas fundraisers, said: "Local employees really got behind this initiative. We've been amazed by their enthusiasm and ideas. Cancer has touched so many of our workers' lives that this gives us the chance to play a real part in fighting the disease. We're sure the funds raised here in Hattersley will be a welcome birthday present for this pioneering charity."

A team of brave Centrica fund-raisers spent the night at Branningans pub in Manchester – reputedly the most haunted in Britain – and raised over £800 for charity.



Nic Jones (left), Director of the Paterson Institute at Christie Hospital and Keith Richards of British Gas in Hattersley celebrate the second Anniversary of Cancer Research UK and £2,000 raised by local staff at Hattersley for the cause.

## Manchester Chamber to launch Tameside Action Plan

Manchester Chamber is ready to step up a gear in Tameside with the launch of its new Tameside Action Plan. The plan, formulated by the Tameside Chamber Executive over the past few months, seeks to ensure that the Chamber is working on issues that really matter to businesses in Tameside.

The plan will highlight four key priority areas, Economic Development, Crime and Disorder, Transport and Environment and Employment and Skills, the pursuit of which will bring the Chamber into much closer contact with many of the Board partners.

The launch of the Action Plan also coincides with the Chamber's move to raise its profile in Tameside with local policy officer Sarah Johnson dedicated to looking after our members in the area and Tameside Chamber Executive Chair John Williams keen to work towards a flourishing business environment.

If you would like any further information on the Action Plan or the work of the Chamber then please contact Sarah Johnson on 0161 237 4226 or sarah.johnson@mcci.org.uk

## NEW CHARTER MOVE

New Charter Housing Trust is about to move into their £8m eco-friendly headquarters. Work at the Cavendish Street site in Ashton will be completed on March 17 and see Tameside's biggest landlord condense 11 offices, containing 370 staff, into one.