



**Tameside Strategic Partnership**

**Partnership Agreement**

**TSP Board**

**And**

**Children and Young People's Strategic Partnership**



**Tameside Strategic Partnership**  
Many Partners, One Direction

## The Tameside Sustainable Community Strategy

“Tameside is a great place to live. We will make it even better. It will continue to be a borough where the people who live here feel at home, are able to get involved in the life of the community, where they can contribute to a prosperous local economy, feel safe and healthy, and take active responsibility in their environment.” (Tameside Community Strategy 2009-19)

The Sustainable Community Strategy sets out 6 aims for the Borough which were identified following extensive consultation with local people:

- Supportive Tameside
- Safe Tameside
- Prosperous Tameside
- Learning Tameside
- Healthy Tameside
- Attractive Tameside

Each priority has a vision for the Borough, they are:

### Supportive Tameside

We want Tameside to be a place where people get on and look out for each other, and everyone shares in the growing prosperity, so that Tameside is an even better place to live now and in the future.

### Safe Tameside

We want Tameside to be a place where everyone feels safe and secure, where crime and antisocial behaviour rates are low and continue to fall, and where people have respect for each other now and in the future.

### Prosperous Tameside

We want Tameside to be a place where more and better jobs are available for everyone, local people are able to access these jobs and where new and established businesses can flourish.

### Learning Tameside

We want Tameside to be a place where expectations and achievements are raised in schools, through exams and in other ways, so that young people have the best possible start in life and also that people in Tameside continue to improve their skills as adults.

### Healthy Tameside

We want Tameside to be a place where everyone is healthy – both physically and mentally – and feels positive about the future.

### Attractive Tameside

We want Tameside to be a place that is clean, green and an attractive place to be for everyone. We are determined to pass onto future generations a better quality of environment than we inherited.

## **The Tameside Strategic Partnership**

The Tameside Strategic Partnership (TSP) consists of a Board of 30 members and seven Thematic Partnerships. The Thematic Partnerships focus on particular areas of the Sustainable Community Strategy through a series of formal Partnership Agreements. The Board co-ordinates and supports the work of the Thematic Partnerships, so ensuring an effective delivery framework.

A number of cross-cutting groups such as the Link Officers Group, the Cross Sector Policy Group, and the Sustainable Communities Group work across the Partnership Structure (Appendix A).

### **The Aims of the TSP**

- To promote the economic, social and environmental well-being of the Borough and contribute to the achievement of sustainable development
- To bring together leaders of key partnerships and organisations from the public, private, voluntary and community sectors in Tameside
- To provide leadership and long-term vision and form an overarching strategic partnership in order to serve the interests of all local people
- To create, implement, monitor and review a Sustainable Community Strategy with specific aims and measures which reflect the needs and priorities of the people of Tameside
- To utilise existing partnerships and organisations and seek to reduce the bureaucratic burden by rationalising structures and partnerships operating in Tameside where there is overlap.

### **Code of Conduct**

While the TSP Partnership is not a statutory public body and most of the members are not holders of public office they should conform to the code of conduct set out in the Nolan Report – Standards in Public Life. This includes the following:

Selflessness; Integrity; Objectivity; Accountability; Openness; Honesty; Respect for others; Leadership

### **The TSP Board**

- Meetings of the Board will normally be held 4 times per annum unless otherwise decided by the Board
- Each Year the TSP holds an Annual Conference which includes representatives of all the Thematic Partnerships
- The work of the Board is directed by the Chair and two Vice-Chairs
- The Board is supported by the Council's Policy and Partnerships Unit and in particular the TSP Co-ordinator who supports the operation of the Board and distributes and co-ordinates reports to the Board and any actions required thereafter
- The agenda papers for each Board Meeting will be issued 7 days prior to each meeting

## **The Children and Young People's Partnership**

The Children and Young People's Partnership is a partnership of agencies that co-ordinate the planning and commissioning of services for children and young people, working together to achieve the best possible outcomes for children and young people in Tameside.

The Children and Young People's Partnership is made up of a board supported by sub-groups linked to the Every Child Matters outcomes (Appendix B).

### **The Aims of the Children and Young People's Partnership:**

The Children and Young People's Partnership strongly believes that all children and young people in Tameside should be provided with a framework in which they can:

- Be healthy;
- Stay safe;
- Enjoy and achieve;
- Make a positive contribution to society;
- Experience social and economic well-being.

### **Key Strategies and Documents**

- Tameside's Commissioning Framework To Deliver Better Outcomes for Children and Young People 2005-2008
- Tameside's Integrated Performance Management Framework To Deliver Better Outcomes for Children and Young People
- Children and Young People Plan 2007-10
- Tameside Children's Workforce Strategy 2006-2009
- Duty to Cooperate
- Project Plan for Integrating Services for Children and Young People 2005-2008
- Children's Needs Framework

## **Roles and Responsibilities**

### **The TSP Board will:**

- Prepare, implement and review the Tameside Sustainable Community Strategy
- Oversee the negotiation and performance management of Tameside's Local Area Agreement by a delegated Steering Group
- Oversee and monitor all National Indicator Set (NIS) measures on behalf of the Borough.
- Bring together local plans, partnerships and initiatives to ensure that they meet local needs in a complementary and effective way
- Publish information on Quality of Life measures on an on-going basis through the Partnership Information Portal
- Address the needs of priority neighbourhoods with a view to ensuring access to appropriate funding
- Ensure the resources of the Area Based Grant, in particular the Working Neighbourhoods Fund, are used to support the of delivery local priorities effectively and efficiently.
- Publish and implement a Partnership Improvement Programme each year
- Embed a joint framework for better co-ordination of consultation
- Strengthen communication within the TSP through contributions to the TSP website and through publication of a regular newsletter 'Newslines'
- Publish Minutes from the TSP Board meetings and disseminate action points to individual / organisations where appropriate

### **The Thematic Partnerships will:**

- Contribute to the delivery of the Sustainable Community Strategy outcomes for which the Partnership is responsible
- Contribute to and monitor the LAA indicators for which the partnership is responsible and receive updates from the LAA Block Groups as appropriate
- Contribute to and monitor the National Indicator Set (NIS) measures for which the Partnership is responsible
- Produce an Annual Report setting out achievements and areas for improvement, and present it to the Board each year
- Comply with the requirements of the TSP Performance Management Framework
- Contribute to the annual update of the Sustainable Community Strategy providing relevant information including performance data
- Submit data on an on-going basis to contribute to the online Partnership Information Portal
- Provide further information for the TSP Board as and when required, providing requests are appropriate and allowing sufficient time for the Partnership to respond
- Promote the TSP's work when possible through PR and marketing
- Support the TSP Board in publicising successful initiatives, particularly surrounding progress towards the Sustainable Community Strategy
- Liaise with other Thematic Partnerships to develop strategies and actions to achieve the Sustainable Community Strategy aims where appropriate
- Utilise the TSP website and contribute to it's content
- Develop / utilise it's own web presence and ensure that it is updated appropriately

## The Delivery Framework

The Board recognises that each Partnership is operationally independent and will have separate strategies and action plans that underpin their contribution to the Community Strategy (Appendix C). In signing up to this agreement, each Thematic Partnership is committing to work outside organisational boundaries and deliver Tameside's Sustainable Community Strategy through the development of appropriate: action plans; delivery mechanisms; commissioning structures and reporting arrangements.

## The Performance Management Framework

The Performance Management Framework (PMF) implements and monitors the delivery of the Community Strategy and is vital for the TSP to be an effective partnership. The core elements of Tameside's Framework are:

- **Sustainable Community Strategy:** with aims and performance measures for each priority
- **The Local Area Agreement;** which forms a wider basket of measures to monitor the progress towards the Sustainable Community Strategy priorities
- **Partnership Agreements;** with the aims and objectives this Partnership is contributing towards in relation to the Sustainable Community Strategy (see Appendix 'C')
- **Partnership Information Portal (PIP):** this online resource reports on each of the key measures within the Sustainable Community Strategy together with the LAA measures and a selection of local Partnership measures.
- **Annual Reporting:** each Partnership will report annually to the TSP Board on progress against their Partnership Agreement and actions they are taking to achieve improvement. This will include supporting data evidence
- **TSP Development Days:** These events enable qualitative analysis of the TSP performance as a Partnership and discuss areas to be included in the TSP Improvement Plan
- **Board Agendas:** These produce clarity in relation to the link between items discussed at the Board and achievement of the Sustainable Community Strategy
- **Communication:** Effective communication across the TSP structure through regular newsletters, website and TSP Link Officer Group

**Partnership Commitment**

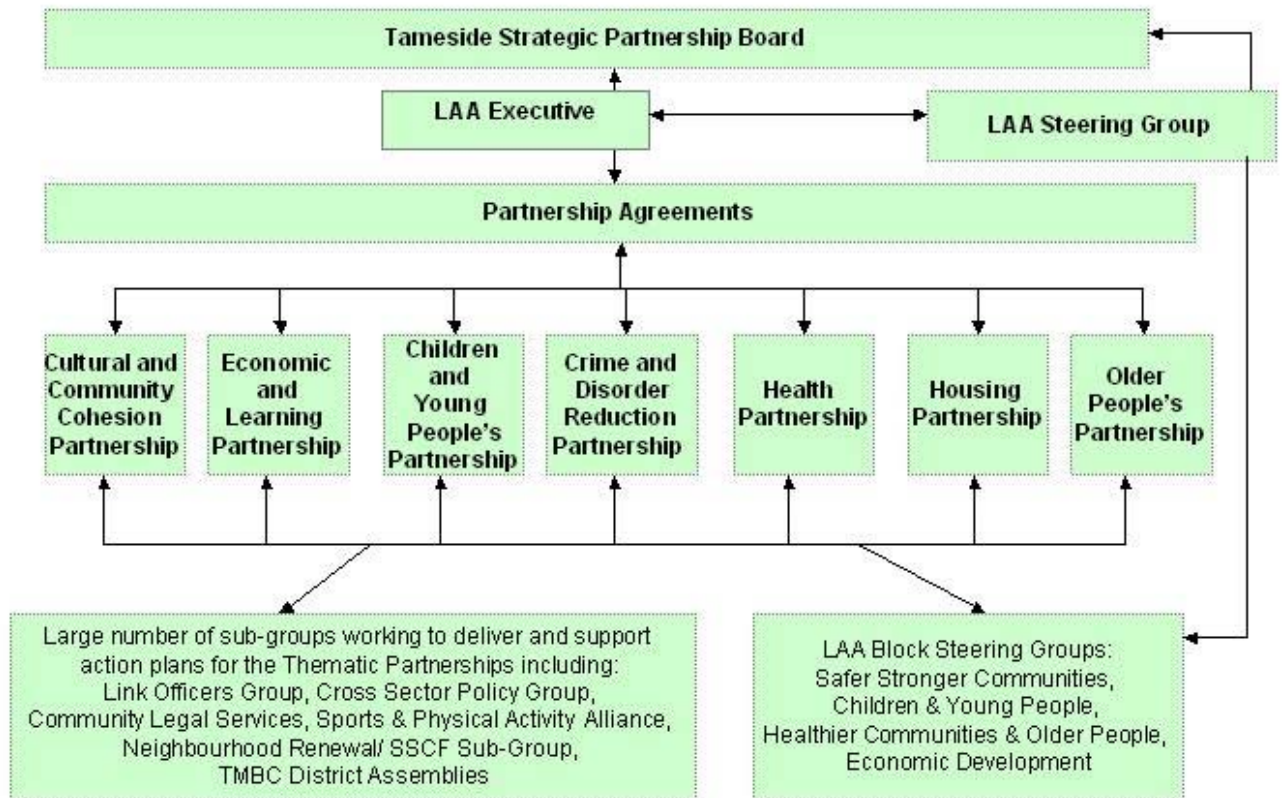
On behalf of the Tameside Strategic Partnership Board, I agree to the terms set out in this Partnership Agreement and commit the Partnership to adhering to requirements of Partnership Working

Chair: Cllr SR Oldham

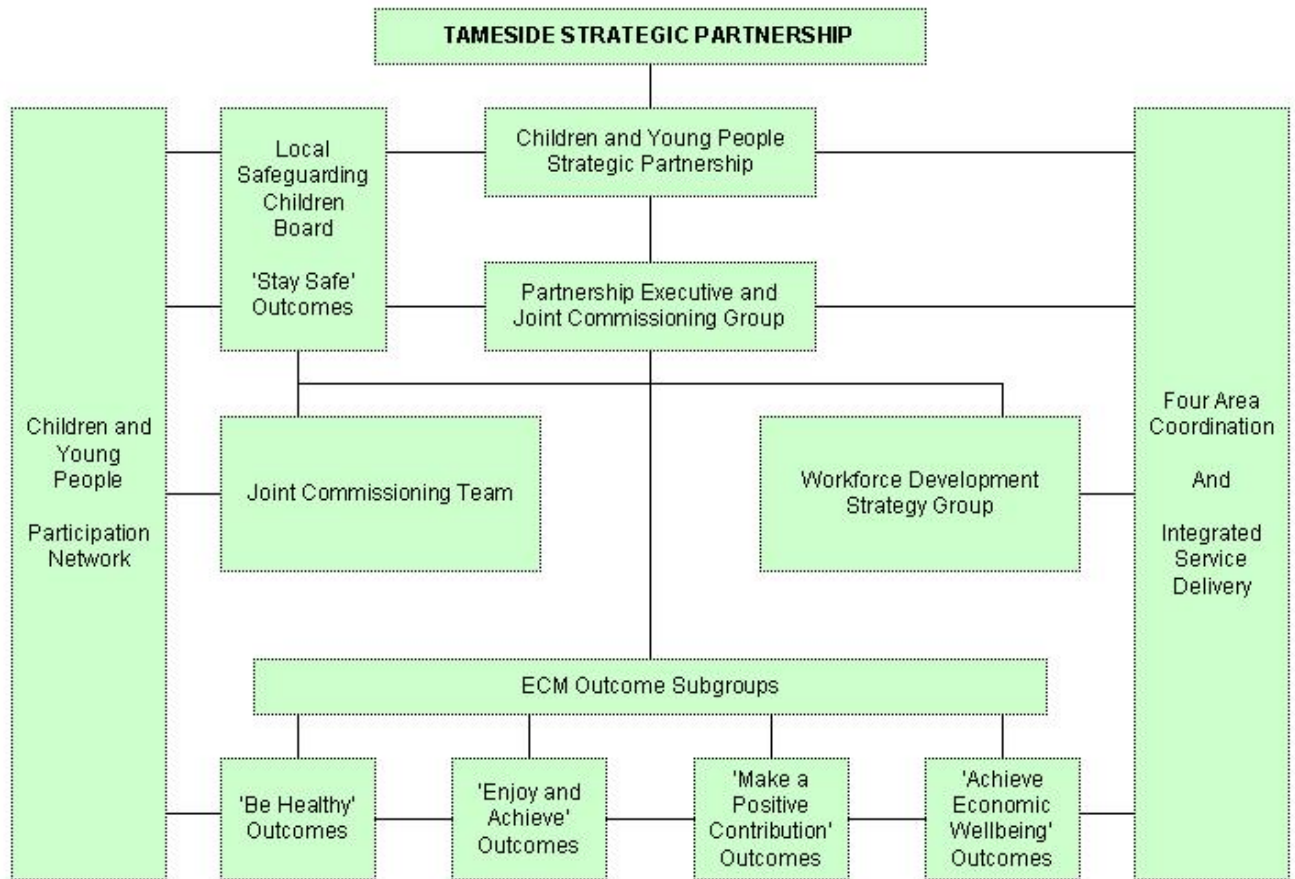
On behalf of the Children and Young People's Partnership, I agree to the terms set out in this Partnership Agreement and commit the partnership to adhering to requirements of Partnership Working

Chair: Cllr A Gwynne

The Structure of the Tameside Strategic Partnership



The Structure of the Children and Young People’s Partnership



| Partnership Agreement   |  |   |
|-------------------------|--|---|
| Outcome                 | Performance Indicators   | Indicator Source  |
| <b>Healthy Tameside</b> |  |   |
| Be Healthy              | Under 18 conception rate (reduce per 1000 girls aged 15-17 from 59.7 in 2005 to 35.8 in 08/09 to 26.8 by 2010) (NI 112)  | ONS conception statistics (Teenage Pregnancy Unit calculates progress)      |
| Be Healthy              | Obesity in primary school age children in Reception (reduce from 15.2% to 15.9% in 2008) (NI 55)   | Collected by the PCT and sent to the NHS Information Centre                 |
| Be Healthy              | Obesity in primary school age children in Year 6 (reduce from 15.2% to 15.9% in 2008) (NI 56)  | Collected by the PCT and sent to the NHS Information Centre                 |
| Be Healthy              | Increase schools achieving Tameside Healthy Food and Drink Award by 35% in 2008 to 60% in 2009 to 85% in 2010  | APA Dataset   |
| Be Healthy              | Children and young peoples' participation in high quality PE and sport (Improve 5-16 sport partnership activity of 2+ hours per week from 75% in 2007 to 80% in 2008 to 95% in 2010) (NI 57) | It is anticipated that this will be collected through an annual DCSF survey |
| Be Healthy              | Reduce % of Year 10 pupils smoking regularly from 27% to 26%   | APA Dataset   |
| Be Healthy              | Increase number of Healthy Schools awards achieved from 37 in 2007 to 55 in 2008   | APA Dataset   |
| Be Healthy              | Improve oral health outcomes for 5 year olds through reducing the average number of decayed/ missing/ filled teeth per child from 2.24 to 2.05 by 2010                                       | APA Dataset   |
| Be Healthy              | Increase number of women breast feeding from 53% in 2007 to 55% in 2008 and 57% in 2009  | APA Dataset   |
| Be Healthy              | Effectiveness of child and adolescent mental health services (Progress towards a comprehensive CAMH Service from 12 (75%) in 2007 to 15 (81%) in 2008 (PAF/CF/A70) (NI 51)                   | CAMHS Mapping   |
| Be Healthy              | Emotional health of children (NI 50)   | Annual TellUs survey  |
| Be Healthy              | Take up of school lunches (NI 52)  | An annual survey of local authorities carried out by the School Food Trust. |
| Be Healthy              | Prevalence of breastfeeding at 6 – 8 weeks from birth (NI 53)  | PCT Child health information records reported to DH quarterly               |
| Be Healthy              | Early Access for Women to Maternity Services (NI 126)  | Collected by DH and provided through Hospital Episode                       |

| Partnership Agreement |   |  |
|-----------------------|---|--|
| Outcome               | Performance Indicators  | Indicator Source   |
|                       |   | Statistics (HES). DH Local Delivery Planning Return (LDPR) will be used to collect key summary data in the first year.             |
| Be Healthy            | Services for disabled children (NI 54)  | It is anticipated that this will be an annual DCSF survey of parents of disabled children.   |
| Be Healthy            | Emotional and behavioural health of Looked After Children (NI 58)   | Statutory SSDA903 return which local authorities provide to DCSF   |
| Be Healthy            | Prevalence of Chlamydia in under 25 year olds (NI 113)  | Data is collected by the National Chlamydia Screening Programme at the Health Protection Agency (HPA).                             |
| Be Healthy            | Substance misuse by young people (NI 115)   | TellUs survey of pupils  |
| Be Healthy            | Children killed or seriously injured in road traffic accidents (NI 48)  | Statistical returns from local authorities (obtained from police authorities, or their agents, or other data processing authority) |
| Be Healthy            | Children travelling to school – mode of travel usually used (NI 198)  | School Census Data (which has been provided by DfT, rather than own School Census Data)  |
| <b>Safe Tameside</b>  |   |  |
| Stay Safe             | Stability of placements for Looked After Children: length of placement -(D78) Long-term stability of LAC from 67% to 71% (NI 63)  | Statutory SSDA903 data collection from local authorities to DCSF   |
| Stay Safe             | Recruit additional 15 foster carers by 2008 and 40 by 2010  | APA Dataset  |
| Stay Safe             | Increase kinship care placement from 12% to 15%   | APA Dataset  |
| Stay Safe             | Stability of placements of Looked After Children: number of moves (Reduce placement moves to 12% by 2008 and to under 10% by 2010) (NI 62)  | Statutory SSDA903 data collection from local authorities to DCSF   |
| Stay Safe             | Timeliness of placements of Looked After Children for adoption following an agency decision that the child should be placed for adoption (Increase stability of LAC adopted following an agency decision to place child for adoption) (NI 61) | Statutory SSDA903 data collection from local authorities to DCSF   |
| Stay Safe             | Percentage of referrals to children's social care going on to initial assessment (Increase referrals which become initial assessments from 35% to 50%) (NI 68)  | CPR3 statutory return from local authorities to DCSF   |

| Partnership Agreement          |   |   |
|--------------------------------|---|---|
| Outcome                        | Performance Indicators  | Indicator Source  |
| Stay Safe                      | The welfare of children in need - Reduce rates of re-referrals to 25%   | APA Dataset   |
| Stay Safe                      | Children who have experienced bullying - (reduction in pupils reporting being bullied to 28% by 2010 from 31%) (NI 69)                          | The TellUs survey   |
| Stay Safe                      | Reduce bullying - Extend Junior Play Leadership scheme all primary schools involved by 2009   | APA Dataset   |
| Stay Safe                      | Percentage of initial assessments for children's social care carried out within 7 working days of referral (NI 59)                              | CPR3 statutory return from local authorities to the DCSF  |
| Stay Safe                      | Percentage of core assessments for children's social care that were carried out within 35 working days of their commencement (NI 60)            | CPR3 statutory return from local authorities to the DCSF. DCSF publish national and LA level data.  |
| Stay Safe                      | Child protection plans lasting 2 years or more (NI 64)  | CPR3 statutory return from local authorities to the DCSF  |
| Stay Safe                      | Percentage of children becoming the subject of a Child Protection Plan for a second or subsequent time (NI 65)                                  | CPR3 statutory return from local authorities to the DCSF  |
| Stay Safe                      | Looked after children cases which were reviewed within required timescales (NI 66)  | Statutory SSDA903 data collection from local authorities to DCSF  |
| Stay Safe                      | Percentage of child protection cases which were reviewed within required timescales (NI 67)   | CPR 3 statutory return from local authorities to the DCSF   |
| Stay Safe                      | Hospital admissions caused by unintentional and deliberate injuries to children and young people (NI 70)  | Information Centre for Health and Social Care Hospital Episode Statistics [HES] database.   |
| Stay Safe                      | Children who have run away from home/care overnight (NI 71)   | Initial scoping of existing data sources indicates that data might be collected at police authority and/or local authority spatial level. |
| Supportive Tameside            |   |   |
| Making a Positive Contribution | Young people's participation in positive activities - (% of Year 10 pupils undertaking voluntary activity target 28% in 2008 from 26%) (NI 110) | The TellUs survey.  |
| Making a Positive Contribution | First time entrants to the Youth Justice System aged 10-17 (Reduce first time entrants to offending by 5%) (NI 111)                             | Ministry of Justice's extract from the Police National Computer   |
| Making a Positive Contribution | Reduce rate of proven re-offending by young offenders (from 51%) (NI 19)  | Youth Offending Team (LA a statutory partner)   |
| Making a Positive              | Increase % young people obtaining accredited outcomes in Youth Service  | APA Dataset   |

| Partnership Agreement          |   |   |
|--------------------------------|---|---|
| Outcome                        | Performance Indicators  | Indicator Source  |
| Contribution                   |   |   |
| Making a Positive Contribution | Increase % of LAC communicating their views to statutory reviews  | APA Dataset   |
| Making a Positive Contribution | Rate of permanent exclusions from school (NI 114)   | Data collected at the pupil level and reported by schools to the DCSF.  |
| Learning Tameside              |   |   |
| Enjoy and Achieve              | Secondary school persistent absence rate (Reduce the number of persistent absences by 20% from 2006 baseline) (NI 87)   | Termly school census  |
| Enjoy and Achieve              | Promote inclusion - 50% of schools to be assessed on the Inclusive Schools Award by 2010  | APA Dataset   |
| Enjoy and Achieve              | Increase numbers of eligible LAC entering at least 1 GCSE to 75% by 2008  | APA Dataset   |
| Enjoy and Achieve              | Increase LAC gaining 5+ A*-C GCSEs (or equivalent at KS4, including English and Maths) (increase to 40% from baseline of 21% by 2010) (NI 101)  | OC2 data collection   |
| Enjoy and Achieve              | Achievement of at least 78 points across the Early Years Foundation Stage with at least 6 in each of the scales in Personal Social and Emotional Development and Communication, Language and Literacy (NI 72) | Early Years Foundation Stage profile results  |
| Enjoy and Achieve              | Achievement at level 4 or above in both English and Maths at Key Stage 2 (NI 73)  | Revised KS2 test results as amended by schools checking exercise for publication of Primary School Achievement and Attainment Tables. |
| Enjoy and Achieve              | Achievement of 5 or more A*-C grades at GCSE or equivalent including English and Maths (NI 75)  | Revised KS4 test results as amended by schools checking exercise for publication of Secondary Achievement and Attainment Tables.      |
| Enjoy and Achieve              | Achievement at level 4 or above in both English and Maths at KS2 (NI 76)  | Revised KS2 test results as amended by schools checking exercise for publication of Primary School Achievement and Attainment Tables. |
| Enjoy and Achieve              | Reduction in number of schools where fewer than 30% of pupils achieve 5 or more A*- C grades at GCSE and equivalent including GCSEs in English and Maths (NI 78)  | Revised KS4 test results as amended by schools checking exercise for publication of Secondary Achievement and Attainment Tables       |
| Enjoy and Achieve              | Inequality gap in the achievement of a Level 3 qualification by the age of 19 (NI 81)   | Matched Administrative Data used for the Statistical First Release (SFR) on   |

| Partnership Agreement |   |  |
|-----------------------|---|--|
| Outcome               | Performance Indicators  | Indicator Source   |
|                       |   | Level 2 and 3 attainment by young people will be provided by DCSF.   |
| Enjoy and Achieve     | Inequality gap in the achievement of a Level 2 qualification by the age of 19 (NI 82)   | Matched Administrative Data used for the Statistical First Release (SFR) on Level 2 and 3 attainment by young people will be provided by DCSF.   |
| Enjoy and Achieve     | Achievement of 2 or more A*-C grades in Science GCSEs or equivalent (NI 84)   | Data collected as part of the Achievement and Attainment Tables exercise, collected by Bath University on behalf of DCSF, and matched to pupil level Schools Census data to produce the National Pupil Database (NPD). |
| Enjoy and Achieve     | Post-16 participation in physical sciences (A Level Physics, Chemistry and Maths) (NI 85)   | National Pupil Database  |
| Enjoy and Achieve     | Secondary schools judged as having good or outstanding standards of behaviour (NI 86)   | OFSTED   |
| Enjoy and Achieve     | Percentage of schools providing access to extended services (NI 88)   | Training and Development Agency for Schools (TDA)  |
| Enjoy and Achieve     | Reduction of number of schools judged as requiring special measures and improvement in time taken to come out of the category (NI 89) | Ofsted school inspection data  |
| Enjoy and Achieve     | Take up of 14-19 learning diplomas (NI 90)  | Diploma Aggregation Service (DAS)  |
| Enjoy and Achieve     | Participation of 17 year-olds in education or training (NI 91)  | DCSF participation estimates broken down by Local Authority by DCSF.   |
| Enjoy and Achieve     | Narrowing the gap between the lowest achieving 20% in the Early Years Foundation Stage Profile and the rest (NI 92)                   | Early Years Foundation Stage Profile results   |
| Enjoy and Achieve     | Progression by 2 levels in English between Key Stage 1 and Key Stage 2 (NI 93)  | Revised KS2 test results matched to KS1 results, as amended by schools checking exercise for publication of Primary Achievement and Attainment Tables.   |
| Enjoy and Achieve     | Progression by 2 levels in Maths between Key Stage 1 and Key Stage 2 (NI 94)  | Revised KS2 test results matched to KS1 results, as amended by schools checking exercise for publication of Primary Achievement and Attainment Tables.   |
| Enjoy and Achieve     | Looked after children reaching level 4 in English at Key Stage 2 (NI 99)  | OC2 data collection  |
| Enjoy and             | Looked after children reaching level 4 in   | OC2 data collection  |

| Partnership Agreement       |   |  |
|-----------------------------|---|--|
| Outcome                     | Performance Indicators  | Indicator Source   |
| Achieve                     | mathematics at Key Stage 2 (NI 100)   |  |
| Enjoy and Achieve           | Achievement gap between pupils eligible for free school meals and their peers achieving the expected level at Key Stages 2 and 4 (NI 102) | The DCSF collates all of the data, enabling it to be matched to the National Pupil Database.   |
| Enjoy and Achieve           | Special Educational Needs – statements issued within 26 weeks (NI 103)  | Local authorities will be asked to provide information to DCLG   |
| Enjoy and Achieve           | The Special Educational Needs (SEN)/non-SEN gap – achieving Key Stage 2 English and Maths threshold (NI 104)                              | Revised KS2 test results as amended by schools checking exercise for publication of Secondary Achievement and Attainment Tables. SEN data collected by DCSF. DCSF collates the data, matching it to the National Pupil Database.   |
| Enjoy and Achieve           | The Special Educational Needs (SEN)/non-SEN gap – achieving 5 A*-C GCSE inc. English and Maths (NI 105)                                   | Revised KS4 test results as amended by schools checking exercise for publication of Secondary Achievement and Attainment Tables<br>SEN data collected by DCSF. DCSF collates the data, matching it to the National Pupil Database. |
| Enjoy and Achieve           | Young people from low income backgrounds progressing to higher education (NI 106)   | Linked NPD-HESA data   |
| Enjoy and Achieve           | Key Stage 2 attainment for Black and minority ethnic groups (NI 107)  | Pupil Level Annual School Census (PLASC) and revised KS2 test results as amended by schools checking exercise for publication of Secondary Achievement and Attainment Tables.  |
| Enjoy and Achieve           | Key Stage 4 attainment for Black and minority ethnic groups (NI 108)  | Pupil Level Annual School Census (PLASC) and National Curriculum Assessments, GCSE and Equivalent Attainment and Post-16 Attainment by Pupil Characteristics, in England.  |
| Enjoy and Achieve           | Delivery of Sure Start Children's Centres (NI 109)  | DCSF/TfC   |
| <b>Prosperous Tameside</b>  |   |  |
| Achieve Economic Well-Being | % of 16-18 year olds who are not in education, employment or training (reduce NEET from 9% to 7.6% ) (NI 117)                             | Client Caseload Information System (CCIS)  |

## Partnership Agreement

| Outcome                     | Performance Indicators   | Indicator Source  |
|-----------------------------|--|---|
| Achieve Economic Well-Being | % of 16-18 LDD in education, employment or training from 16% to 25%  | APA Dataset   |
| Achieve Economic Well-Being | Increase % of 16-18 teenage mothers in education, employment or training from 34% to 40%   | APA Dataset   |
| Achieve Economic Well-Being | Care leavers in education, employment or training (increase ratio of care leavers in EET at age 19 from 0.63 to 0.70) (NI 148)               | Local authority report through SSDA903 return to DCSF   |
| Achieve Economic Well-Being | Young offenders engagement in suitable education, employment or training (NI 45)   | Youth Offending Team  |
| Achieve Economic Well-Being | Achievement of a level 2 qualification by the age of 19 (increase % of under 19 achieving L2 qualification from 62% to 70% in 2008) (NI 79)  | Matched Administrative Data used for the Statistical First Release (SFR) on level 2 and level 3 attainment by young people will be provided by DCSF |
| Achieve Economic Well-Being | Achievement of a level 3 qualification by the age of 19 (increase % of under 19 achieving L3 qualifications from 35% to 39% in 2008) (NI 80) | Matched Administrative Data used for the Statistical First Release (SFR) on level 2 and level 3 attainment by young people will be provided by DCSF |
| Achieve Economic Well-Being | Care leavers in suitable accommodation (increase % of care leavers living in suitable accommodation from 85% to 95% by 2008) (NI 147)        | Local authority report through SSDA903 return to DCSF   |
| Achieve Economic Well-Being | Proportion of children in poverty (NI 116)   | DWP data services   |
| Achieve Economic Well-Being | Take up of formal childcare by low-income working families (NI 118)  | HMRC Tax Credit administrative data.  |
| <b>Attractive Tameside</b>  |  |   |
|                             | Children and young people's satisfaction with parks and play areas (NI 199)  | Tell Us survey  |