



**Tameside Strategic Partnership**

**Partnership Agreement**

**TSP Board**

**And**

**Housing Partnership**



**Tameside Strategic Partnership**  
Many Partners, One Direction

## The Tameside Sustainable Community Strategy

“Tameside is a great place to live. We will make it even better. It will continue to be a borough where the people who live here feel at home, are able to get involved in the life of the community, where they can contribute to a prosperous local economy, feel safe and healthy, and take active responsibility in their environment.” (Tameside Community Strategy 2009-19)

The Sustainable Community Strategy sets out 6 aims for the Borough which were identified following extensive consultation with local people:

- Supportive Tameside
- Safe Tameside
- Prosperous Tameside
- Learning Tameside
- Healthy Tameside
- Attractive Tameside

Each priority has a vision for the Borough, they are:

### Supportive Tameside

We want Tameside to be a place where people get on and look out for each other, and everyone shares in the growing prosperity, so that Tameside is an even better place to live now and in the future.

### Safe Tameside

We want Tameside to be a place where everyone feels safe and secure, where crime and antisocial behaviour rates are low and continue to fall, and where people have respect for each other now and in the future.

### Prosperous Tameside

We want Tameside to be a place where more and better jobs are available for everyone, local people are able to access these jobs and where new and established businesses can flourish.

### Learning Tameside

We want Tameside to be a place where expectations and achievements are raised in schools, through exams and in other ways, so that young people have the best possible start in life and also that people in Tameside continue to improve their skills as adults.

### Healthy Tameside

We want Tameside to be a place where everyone is healthy – both physically and mentally – and feels positive about the future.

### Attractive Tameside

We want Tameside to be a place that is clean, green and an attractive place to be for everyone. We are determined to pass onto future generations a better quality of environment than we inherited.

## **The Tameside Strategic Partnership**

The Tameside Strategic Partnership (TSP) consists of a Board of 30 members and seven Thematic Partnerships. The Thematic Partnerships focus on particular areas of the Sustainable Community Strategy through a series of formal Partnership Agreements. The Board co-ordinates and supports the work of the Thematic Partnerships, so ensuring an effective delivery framework.

A number of cross-cutting groups such as the Link Officers Group, the Cross Sector Policy Group, and the Sustainable Communities Group work across the Partnership Structure (Appendix A).

### **The Aims of the TSP**

- To promote the economic, social and environmental well-being of the Borough and contribute to the achievement of sustainable development
- To bring together leaders of key partnerships and organisations from the public, private, voluntary and community sectors in Tameside
- To provide leadership and long-term vision and form an overarching strategic partnership in order to serve the interests of all local people
- To create, implement, monitor and review a Sustainable Community Strategy with specific aims and measures which reflect the needs and priorities of the people of Tameside
- To utilise existing partnerships and organisations and seek to reduce the bureaucratic burden by rationalising structures and partnerships operating in Tameside where there is overlap.

### **Code of Conduct**

While the TSP Partnership is not a statutory public body and most of the members are not holders of public office they should conform to the code of conduct set out in the Nolan Report – Standards in Public Life. This includes the following:

Selflessness; Integrity; Objectivity; Accountability; Openness; Honesty; Respect for others; Leadership

### **The TSP Board**

- Meetings of the Board will normally be held 4 times per annum unless otherwise decided by the Board
- Each Year the TSP holds an Annual Conference which includes representatives of all the Thematic Partnerships
- The work of the Board is directed by the Chair and two Vice-Chairs
- The Board is supported by the Council's Policy and Partnerships Unit and in particular the TSP Co-ordinator who supports the operation of the Board and distributes and co-ordinates reports to the Board and any actions required thereafter
- The agenda papers for each Board Meeting will be issued 7 days prior to each meeting

## **The Housing Partnership**

The Tameside Housing Partnership brings together Registered Social Landlords, private sector housing developers, supported housing providers, voluntary and community agencies, regional agencies, other statutory agencies, private landlords, Council officers, Councillors and residents.

### **The Aims of the Housing Partnership:**

- Improve housing choice, quality and affordability for all Tameside residents;
- Develop a Partnership framework to engage Housing providers and Agencies;
- Develop local solutions to local housing needs.
- Maintain an up to date overarching Tameside Housing Strategy and monitor progress on key targets;
- Develop and implement specific housing and support strategies for particular client groups where appropriate including vulnerable residents;
- Secure funding to provide new affordable homes and improve current stock;
- Promote Affordable Warmth for all households
- Ensure that all housing meets Government's "Decent Homes Standard" target by the 2010 deadline;
- Support joint commissioning arrangements to ensure the provision of quality supported housing services meet the needs of vulnerable people.
- Support Housing Associations to develop Decent Neighbourhood Standards and promote the place shaping

### **Key Strategies and Documents:**

- Tameside Housing Strategy
- Tameside Homelessness Strategy
- Tameside Supporting People Strategy
- Local Development Framework

## **Roles and Responsibilities**

### **The TSP Board will:**

- Prepare, implement and review the Tameside Sustainable Community Strategy
- Oversee the negotiation and performance management of Tameside's Local Area Agreement by a delegated Steering Group
- Oversee and monitor all National Indicator Set (NIS) measures on behalf of the Borough.
- Bring together local plans, partnerships and initiatives to ensure that they meet local needs in a complementary and effective way
- Publish information on Quality of Life measures on an on-going basis through the Partnership Information Portal
- Address the needs of priority neighbourhoods with a view to ensuring access to appropriate funding
- Ensure the resources of the Area Based Grant, in particular the Working Neighbourhoods Fund, are used to support the of delivery local priorities effectively and efficiently.
- Publish and implement a Partnership Improvement Programme each year
- Embed a joint framework for better co-ordination of consultation
- Strengthen communication within the TSP through contributions to the TSP website and through publication of a regular newsletter 'Newsline'
- Publish Minutes from the TSP Board meetings and disseminate action points to individual / organisations where appropriate

### **The Thematic Partnerships will:**

- Contribute to the delivery of the Sustainable Community Strategy outcomes for which the Partnership is responsible
- Contribute to and monitor the LAA indicators for which the partnership is responsible and receive updates from the LAA Block Groups as appropriate
- Contribute to and monitor the National Indicator Set (NIS) measures for which the Partnership is responsible
- Produce an Annual Report setting out achievements and areas for improvement, and present it to the Board each year
- Comply with the requirements of the TSP Performance Management Framework
- Contribute to the annual update of the Sustainable Community Strategy providing relevant information including performance data
- Submit data on an on-going basis to contribute to the online Partnership Information Portal
- Provide further information for the TSP Board as and when required, providing requests are appropriate and allowing sufficient time for the Partnership to respond
- Promote the TSP's work when possible through PR and marketing
- Support the TSP Board in publicising successful initiatives, particularly surrounding progress towards the Sustainable Community Strategy
- Liaise with other Thematic Partnerships to develop strategies and actions to achieve the Sustainable Community Strategy aims where appropriate
- Utilise the TSP website and contribute to it's content
- Develop / utilise it's own web presence and ensure that it is updated appropriately

**Partnership Commitment**

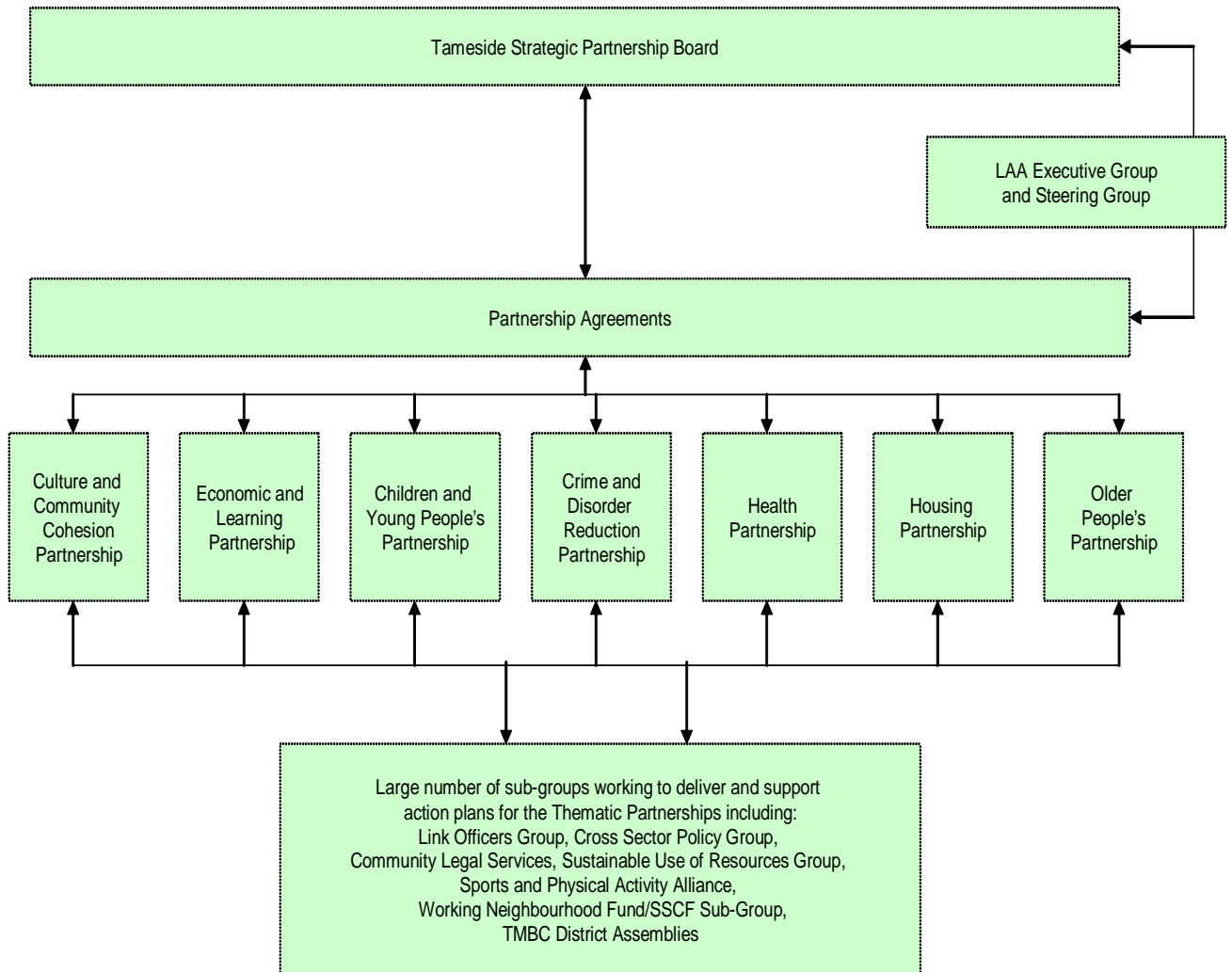
On behalf of the Tameside Strategic Partnership Board, I agree to the terms set out in this Partnership Agreement and commit the Partnership to adhering to requirements of Partnership Working

Chair: Cllr SR Oldham

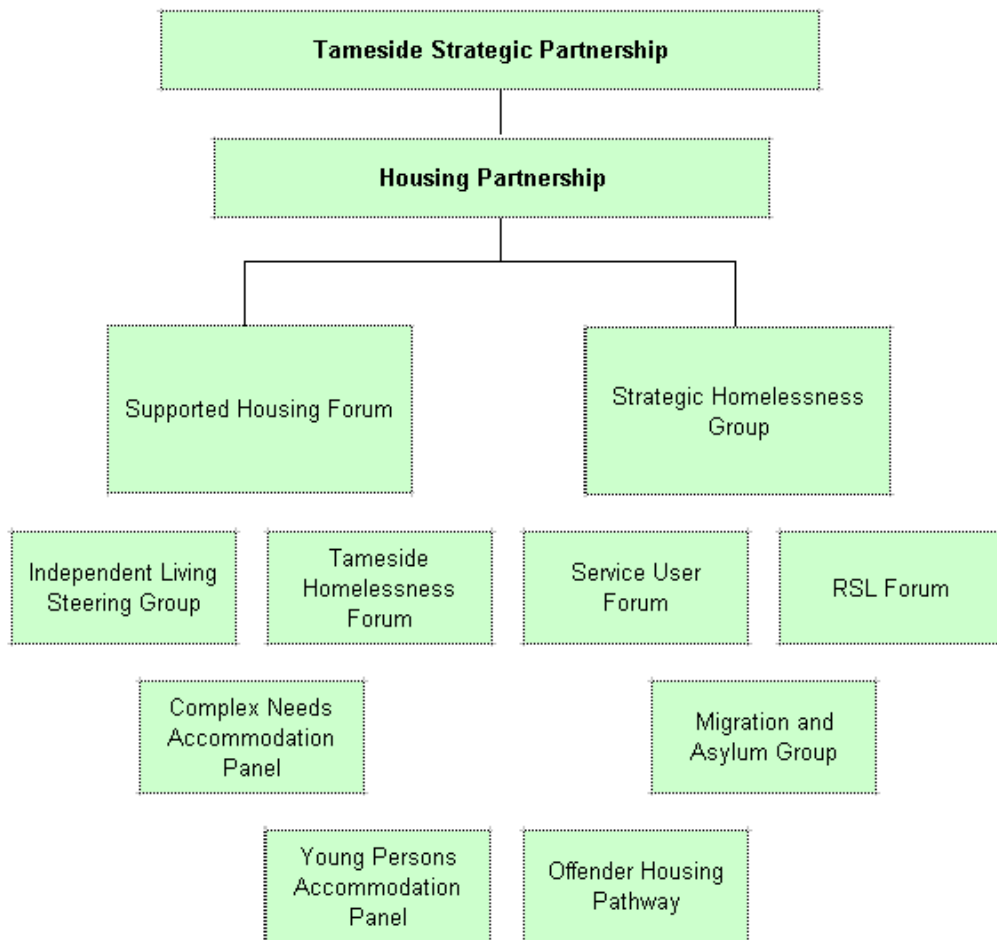
On behalf of the Housing Partnership, I agree to the terms set out in this Partnership Agreement and commit the partnership to adhering to requirements of Partnership Working

Chair: Councillor Brenda Warrington

The Structure of the Tameside Strategic Partnership



### The Structure of Housing Partnership



HoP Code	National/local indicator	Indicator Description
<b>Supportive Tameside</b>		
HoP 1	Local	Increase the number of vulnerable people in the private sector housed in decent homes (cumulative)
HoP 2	Local LAA indicator	Increase the number of homelessness cases prevented per 1,000 households
HoP 3	Local	Repeat Homelessness - Reducing No of households accepted as Homeless that had been previous accepted within past 2 years
HoP 4	NI 156	Number of households living in Temporary Accommodation PSA 20
HoP 5	Local	Number of lone parents under the age of 18 occupying dwellings and units with at 1st April which have 1. On-site support 2. Floating support
HoP 6	Local	Percentage of lettings to BME households by RSLs
HoP 7	NI 147	Care leavers in suitable accommodation PSA 16
HoP 8	NI 46	Young Offenders access to suitable accommodation
HoP 9	NI 143	Offenders under probation supervision living in settled and suitable accommodation at the end of their order or licence PSA 16
HoP 10	NI 145	Adults with learning disabilities in settled accommodation PSA 16
HoP 11	NI 149	Adults in contact with secondary mental health services in settled accommodation PSA 16
<b>Prosperous Society</b>		
HoP 12	Local	Reduce turnover in Social Housing RSL Stock
HoP 13	Local	Reduce voids in social housing RSL Stock
HoP 14	Local	Percentage of social housing meeting standards of decency in Tameside

HoP 15	Local	Tenants' satisfaction with the services of Registered Social Landlords
HoP 16	Local	Net gains of households moving into the Borough
HoP 17	Local	Number new-build 3 and 4 bed properties built in year
HoP 18	NI 154	Net additional homes provided PSA 20
HoP 19	NI 155	Number of affordable homes delivered (gross) PSA 20
HoP 20	NI 187	Tackling fuel poverty – people receiving income based benefits living in homes with a low energy efficiency rating Defra DSO
		Tackling fuel poverty - % people receiving income based benefits living in homes with a low energy rating b) high energy efficiency
HoP 21	NI 180	Changes in Housing Benefit/ Council Tax Benefit entitlements within the year DWP DSO
HoP 22	NI 181	Time taken to process Housing Benefit/Council Tax Benefit new claims and change events DWP DSO (Exchequer)
<b>Safe Tameside</b>		
HoP 23	Local	Percentage of residents (of registered social Landlords) who feel safe in their neighbourhoods
<b>Healthy Tameside</b>		
HoP 24	Local	% of sub £1,000 equipment and non structural Adaptations installed within 7 days
HoP 25	Local	Reduce waiting time for delivery of service adoptions - Priority1 Priority 2a, 2b, 2c
HoP 26	Local	Number of people assisted through the Anchor 'Staying Put' Scheme (60+ age group only)
HoP 27	NI 141	Number of vulnerable people achieving independent living CLG DSO (Will be measured by SP system)

HoP 28	NI 142	Number of vulnerable people who are supported to maintain independent living PSA 17 (SP Measure)
<b>Attractive Tameside</b>		
HoP 29	Local	% of homes built on previously developed land
HoP 30	NI 159	Supply of ready to develop housing sites CLG DSO
HoP 31	Local	Number of private sector dwellings (vacant for more than 6 months) returned to occupation or demolished as a direct result of action by LA
	NI 160	Local Authority tenants' satisfaction with landlord services <b>NOTE:</b> Local Authority does not provide council homes. Local indicator (HoP 15 ) is a proxy indicator
	NI 158	% non - decent council homes <b>NOTE:</b> Local Authority does not provide council homes. Local indicator (HoP 14 ) is a proxy indicator