

Integrated Offender Management

Fewer victims, improved life
chances, reduced cost



Tameside Strategic Partnership
Many Partners, One Direction

Background and context

- ▶ Crime reducing but not fast enough – complex issue
- ▶ No single agency can deliver - Partnership
- ▶ Something different needed - Innovation
- ▶ Sustainable change in terms of outcome – quality and cost (reduced demand)
- ▶ Strong leadership – Shared purpose and funding
- ▶ Realignment/culture change



Tameside Strategic Partnership
Many Partners, One Direction

Crime and Disorder Reduction

- ▶ Reducing the opportunity for crime to occur by adding to security or improving the design of a locality.
- ▶ Increasing the ability of potential victims to protect themselves against crime.
- ▶ Controlling or changing the behaviour of offenders through sanction and/or support.



Tameside Strategic Partnership
Many Partners, One Direction

Strategic Problem-solving through offender management

- ▶ To stop and change the criminal behaviour of offenders.
- ▶ To reduce the number of victims and the fear of crime.
- ▶ To build safer and stronger communities in Tameside - Regeneration.
- ▶ To reduce social exclusion.



Tameside Strategic Partnership
Many Partners, One Direction

What is Offender Management?

- ▶ The co-ordination of controls and supports within the Criminal Justice System
- ▶ In custody and the community
- ▶ Police, Probation, Prison but also Housing, Health, Employment and Learning and Children and Families



Tameside Strategic Partnership
Many Partners, One Direction

What is IOM?(1)

- ▶ Enhanced offender management for the most dangerous and prolific
- ▶ Co-location and shared IT systems
- ▶ Offenders viewed as a priority group
- ▶ Robust and rapid supervision and enforcement
- ▶ Rapid access to services and support
- ▶ Service to non-statutory cases
- ▶ Daily intelligence and a real time response



Tameside Strategic Partnership
Many Partners, One Direction

What is IOM?(2)

- ▶ Direct link to Neighbourhood Action Teams
- ▶ Partnership problem-solving
- ▶ Bespoke accommodation support service
- ▶ Out of hours home visiting
- ▶ Development of weekly surgeries at local prisons for release planning
- ▶ Pilot of offender health programme
- ▶ Linkage with 'recovering' community



Tameside Strategic Partnership
Many Partners, One Direction

Stop and change behaviour – How does it work?

- ▶ Stabilisation and control
- ▶ Introduction of new skills, attitudes and thinking
- ▶ Supervised consolidation
- ▶ Community integration – sustained change



Tameside Strategic Partnership
Many Partners, One Direction

How does it work?

- ▶ Internal Control
- ▶ Aspiration – employment
- ▶ Suitable and settled housing
- ▶ Access to treatment – health
- ▶ Children and Families – community support



Tameside Strategic Partnership
Many Partners, One Direction

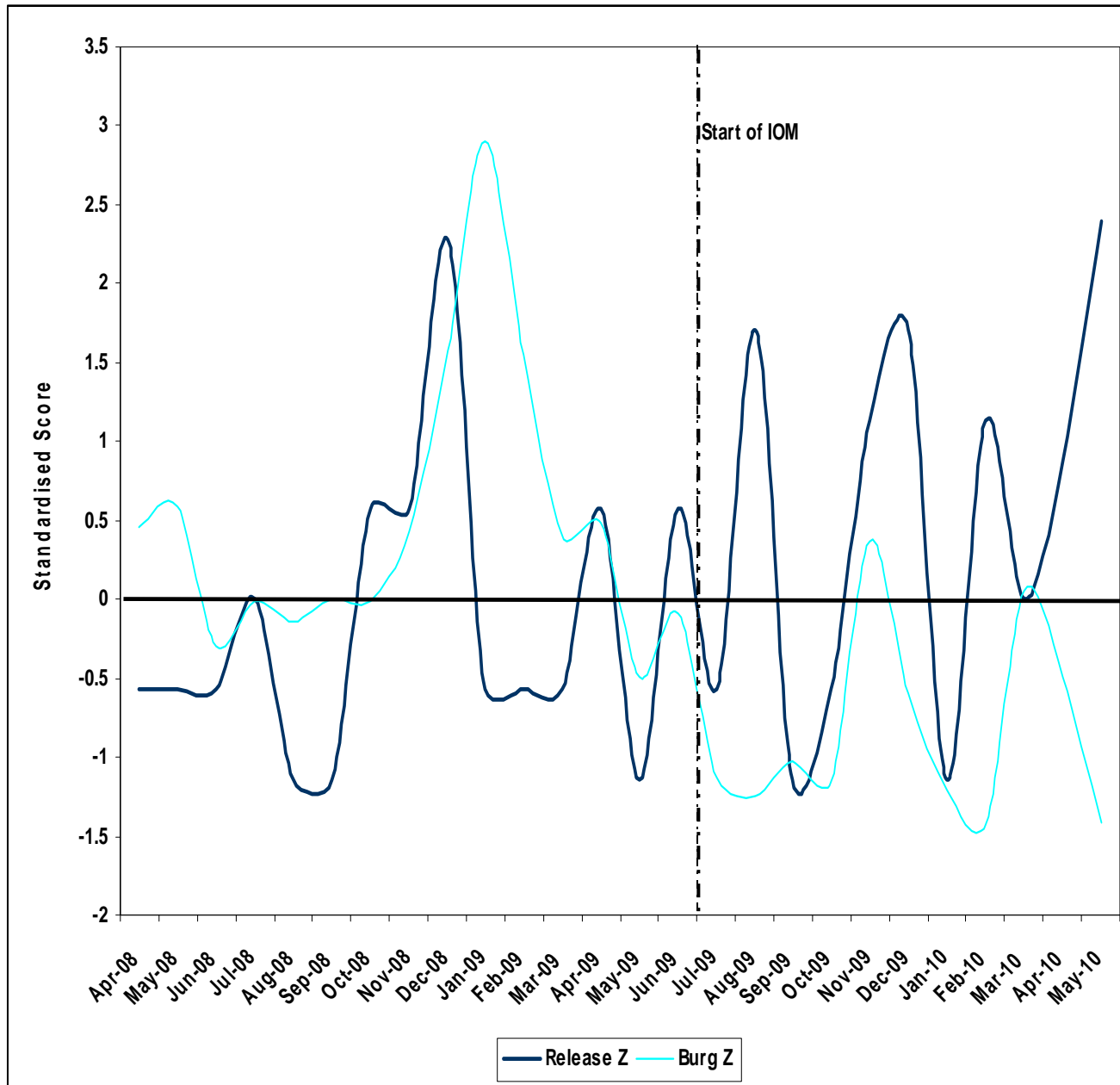
Does it work?

- ▶ Reduced Re-offending – 37.5% IOM cohort/ 57% PPO cohort
- ▶ Reduced cost – £650,000



Tameside Strategic Partnership
Many Partners, One Direction

Figure 1: Standardised Chart of Tameside Burglary Levels and Burglary Prison Releases (Source: GMP Tactical iBase and PINS)



Tameside Strategic Partnership
Many Partners, One Direction

Next steps – The Reducing Re-Offending Strategy

- ▶ Build on learning
- ▶ Commission services that best support the management and rehabilitation of offenders
- ▶ A justice system that has the confidence of the public and can solve problems.
- ▶ To use volunteering and peer role modelling to assist offender rehabilitation



Tameside Strategic Partnership
Many Partners, One Direction

A Customer/Stakeholder Focus

- ▶ Victims
- ▶ The Community
- ▶ The Courts
- ▶ The Partnership
- ▶ Service Users



Tameside Strategic Partnership
Many Partners, One Direction